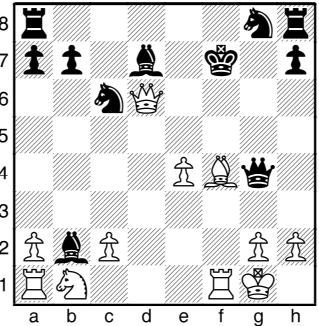
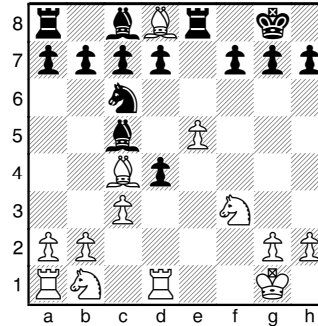
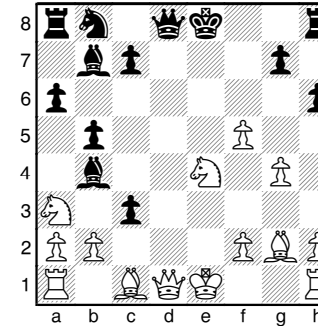
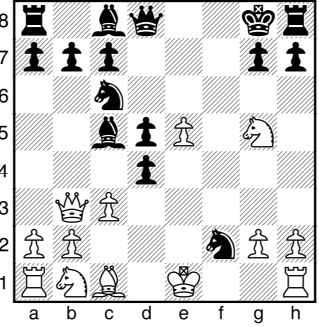
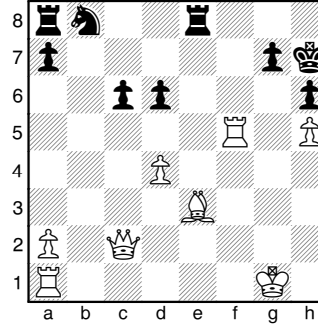
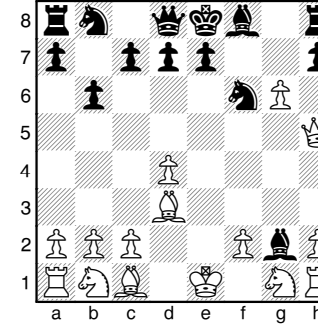
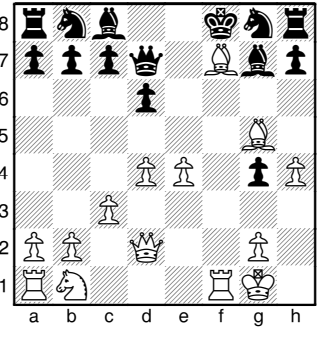
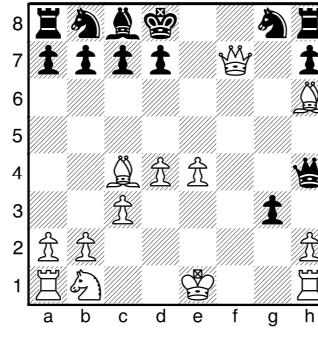
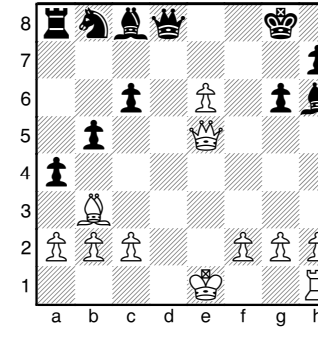
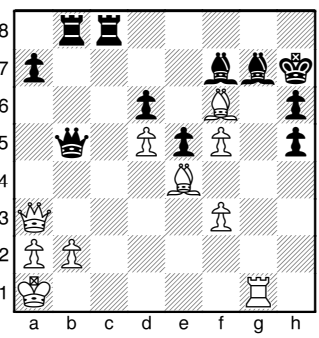
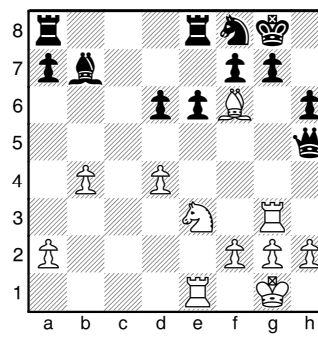
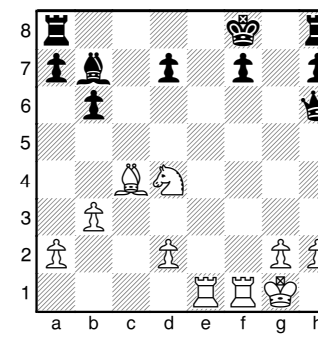
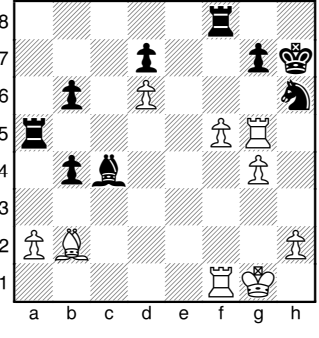
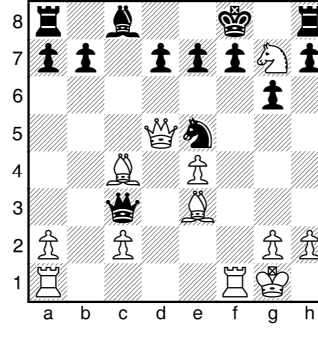
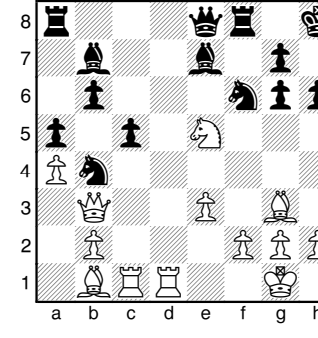


Arbeitsblätter für den Schachunterricht		Name: _____
Unterrichtsergebnis	1. THEMA: Doppelangriffe durch 2 Figuren	RTP: GLT1.6
Trage die Ergebnisse in der Schachnotation unter dem Diagramm ein.		
Zu 4.2.3 Abzugsschach		
Gruppe		
		
Partner		
		

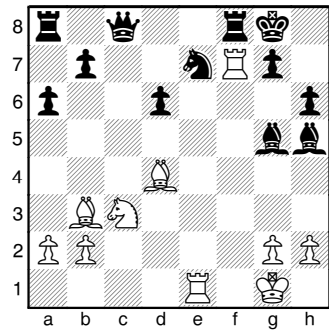
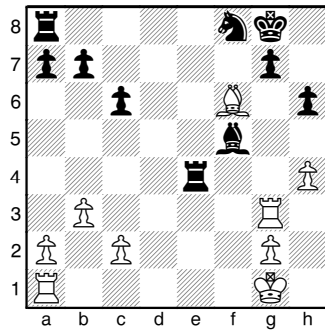
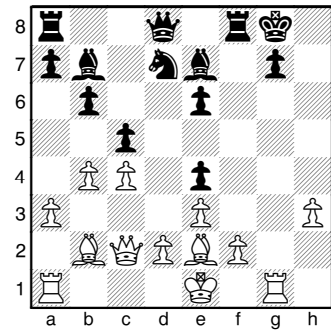
Einzel		
		

Zu 4.2.3 Abzugsschach – Zwickmühle

Gruppe		
		

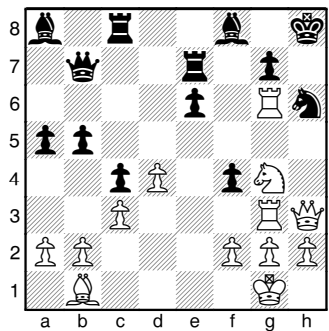
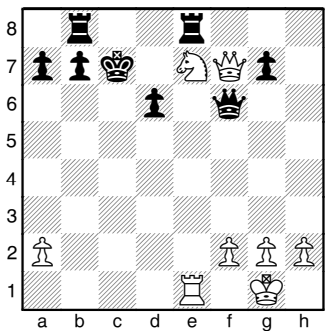
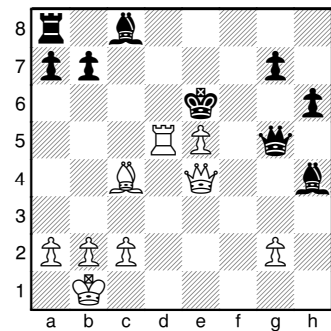
Partner		
		

Einzel

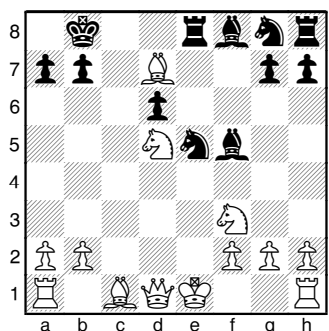
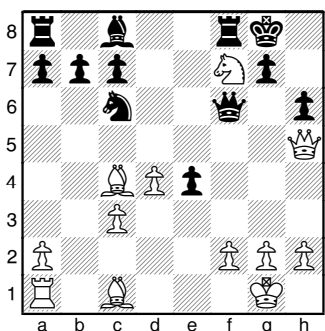
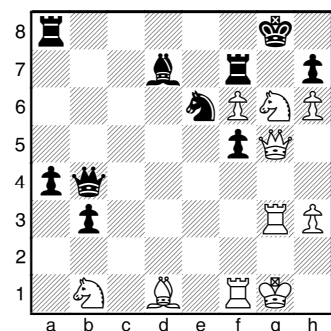


Zu 4.2.2 Doppelschach

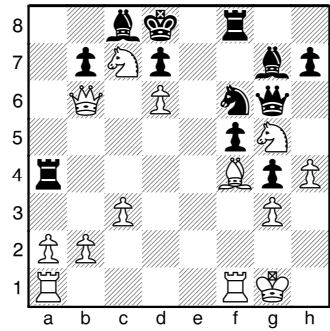
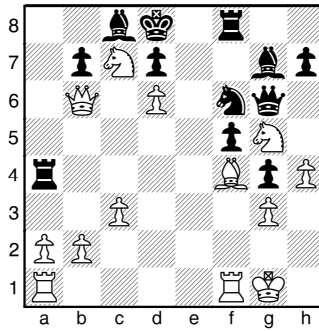
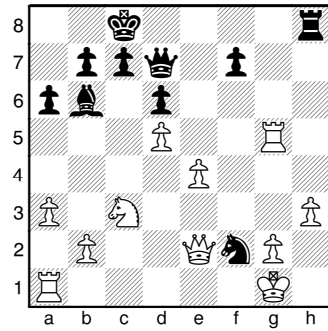
Gruppe



Partner

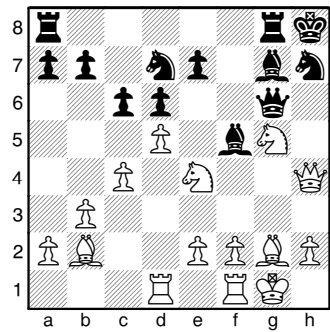
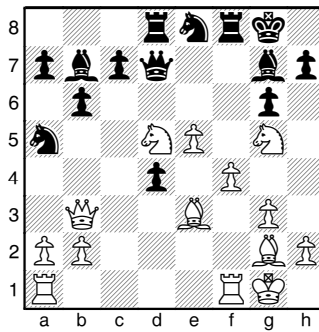
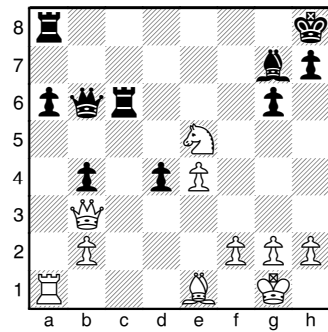


Einzel

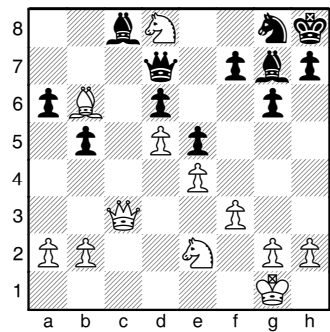
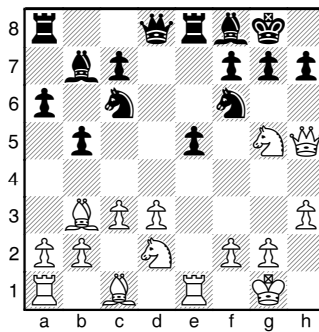
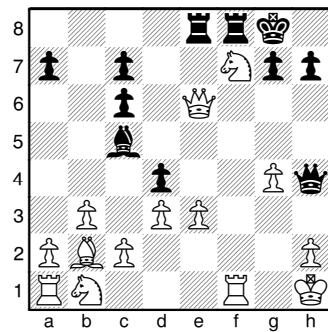


Zu 4.2.2 Doppelschach – Stickmatt

Gruppe



Partner



Einzel
