

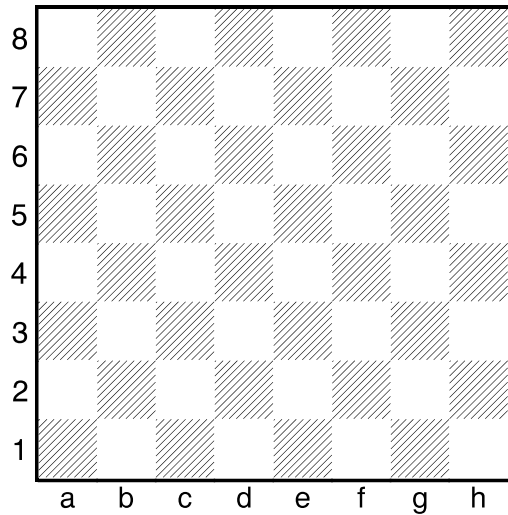
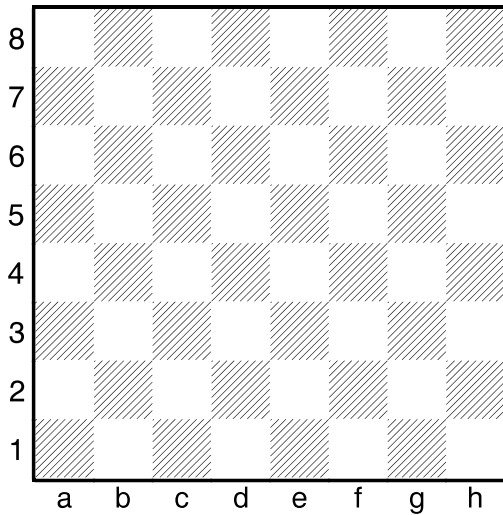
**Arbeitsblätter für den Schachunterricht** Name:

Unterrichtsergebnis **1. THEMA: Einteilige Doppelangriffe: Gabel** RTP: GLT1.1

Erfinde und zeichne je drei **Gabelangriffe** mit zwei verschiedenen Farben in die Diagramme ein.

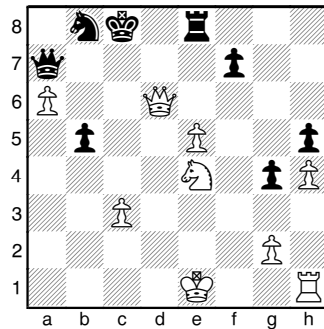
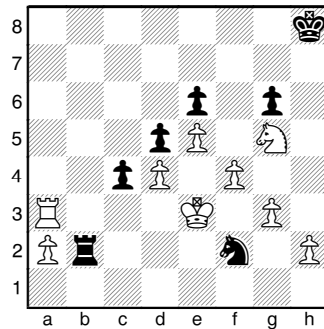
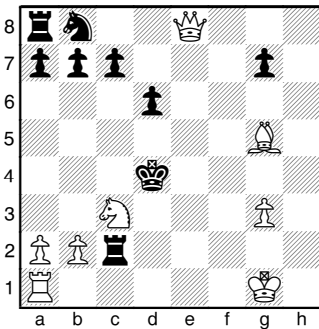
Kurzschrittler-Gabel

Langschrittler-Gabel

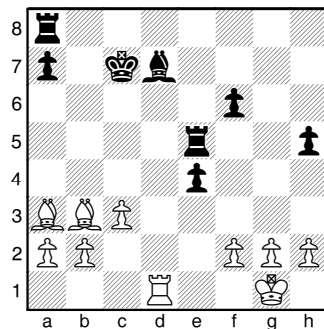
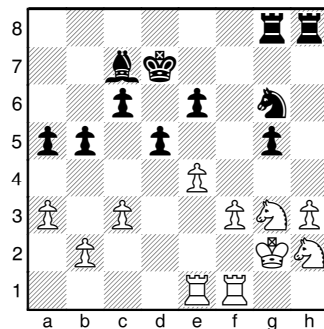
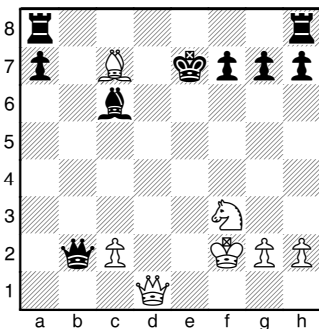


Notiere das Ergebnis unter dem Diagramm. Falls nicht möglich, zeichne einen Pfeil ein.

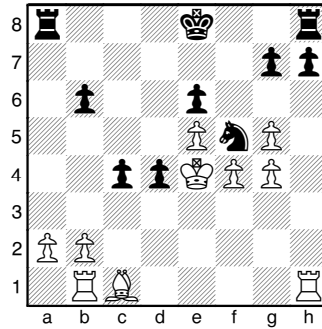
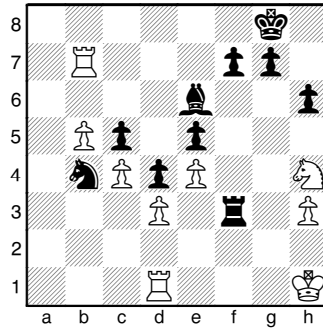
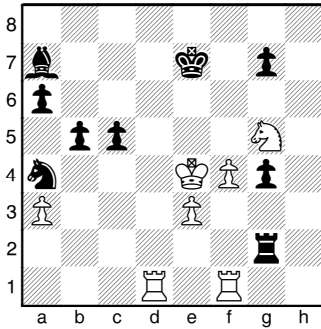
**Gruppe**



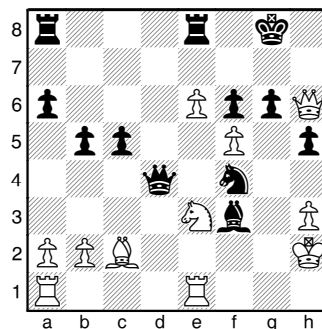
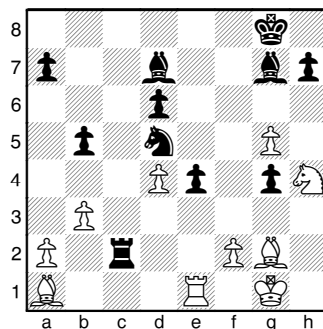
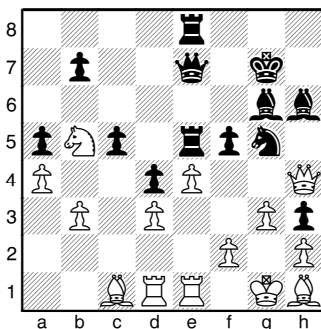
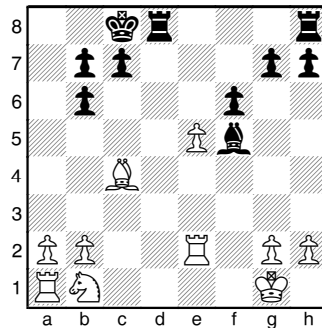
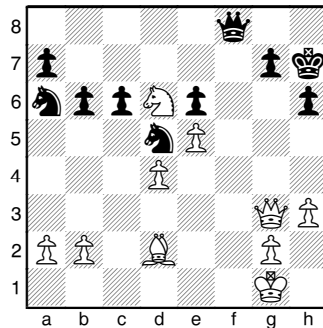
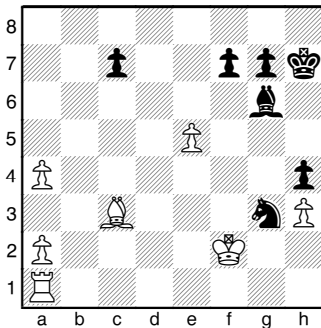
**Partner**



**Einzel**



**Hausi**



**Bonus**

